

# Liquidator 96

**RAININ**  
Pipetting 360°



## **Liquidator™ 96**

Fast – Immediate results

Easy – Like a manual pipette

Accurate – Consistent results

Convenient – No programming



**Pipette 96 Wells at Once**  
With the Simplicity of a Manual Pipette

**METTLER TOLEDO**

# Liquidator Fills 96 Wells Quicker and Easier

**Manually pipette into 96 wells simultaneously on a bench top or in a laminar flow cabinet. No electricity, computer programming or complicated robotics are required. Liquidator 96 is completely portable and easily moved between labs and benches.**

METTLER TOLEDO understands that as a leading edge researcher, fast, reliable equipment is a must in order to become the first to publish, or bring a product to the marketplace. Liquidator 96 helps to speed up scientific discovery and to attain goals.



## 1. Load tips

Liquidator 96 uses Liquidator LTS tips to dramatically reduce tip mounting and ejection forces.



## 2. Aspirate sample

Rainin's patented LTS LiteTouch system ensures absolutely consistent sample pickup across all 96 channels.



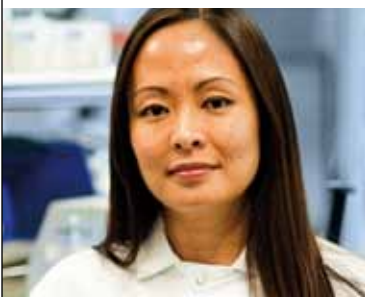
## 3. Dispense sample

Liquidator 96 is faster than all other manual pipetting methods and even many robots, loading a 96-well plate in just seconds.

**Fast** Significantly improves throughput speed

**Easy** As simple as a manual pipette

**Accurate** Consistently reproducible results



**“We currently use Rainin’s Liquidator 96 for high-throughput applications. Finding it versatile for many areas of application, we replaced lower capacity pipettes with Liquidator 96 in PCR, purification and hybridization processes...”**

Kay Mekar, Lab Supervisor, Scientific Services, Affymetrix Research Services Laboratory

## **A Wide Range of Applications**

Liquidator 96 is a unique manual pipetting system for medium- to high-throughput applications:

- Plate and mother/daughter replications
- Reformatting from 96- to 384 well and back
- Washing and dilution steps
- ELISA and other enzyme-based assays
- Dispensing PCR buffers and preparing master mixes



**See Liquidator in action**

Watch our video at [www.mt.com/liquidator96](http://www.mt.com/liquidator96)

# Fast PCR Preparation

## Absolutely Contamination-Free

**Faster than other manual pipettes and an effective alternative to complicated robotic systems. Total speed control; fast for rapid filling of master mix into a PCR plate or slow for delicate or expensive samples.**

Liquidator 96 increases speed, efficiency, and accuracy when manually pipetting into 96- or 384-well plates. Results are consistently reliable when using inert and contamination-free BioClean LTS tips, manufactured under clean room conditions making them ideal for PCR use, tissue culture, genetic studies, forensic applications and much more.



### **96 and 384-wells** **Quick formatting change**

Liquidator 96 is ideal for genomic, proteomic, and cellular assays. A 96-well plate can be loaded in seconds and a 384-well plate in only four passes.



### **96 and 384-wells** **Quickly filled**

With Liquidator, 96 wells can easily be filled in less than 20 seconds. Perfect when preparing master mixes and for getting a PCR plate into the thermal cycler fast.



**See how Liquidator works**

Watch our video at [www.mt.com/liquidator96](http://www.mt.com/liquidator96)





## BioClean

### Tested and certified tips

Inert BioClean tips contain no additives that could influence your results. These tips are filtered, pre-sterilized and certified free of RNase, DNase, DNA, Pyrogens, ATP and trace organics.

## Reliable Results with BioClean Tips

BioClean LTS tips provide accurate delivery free from contamination for totally reproducible results well-to-well and plate-to-plate.

Contaminants tested	Testing detection levels
RNase	$\leq 10^{-9}$ Kunitz / $\mu\text{L}$
DNase	$\leq 10^{-7}$ Kunitz / $\mu\text{L}$
DNA	< 1 copy human DNA
Pyrogens	0.001 EU/ $\mu\text{L}$
ATP	< $2 \times 10^{-12}$ mg/ $\mu\text{L}$

# Highly Accurate, No-Stress ELISA

## Rely on Liquidator 96 Reproducibility

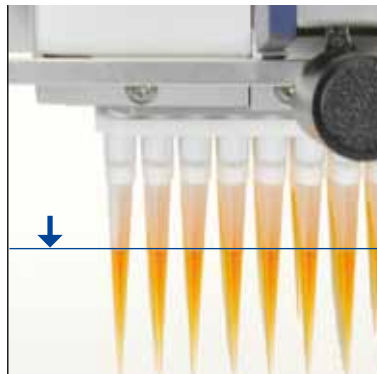
**Stay focused on the true scientific challenges. Liquidator 96 provides new levels of accuracy, precision and control for every type of ELISA assay.**

When highly reproducible and consistent results are necessary from plate-to-plate and well-to-well, rely on the speed and accuracy of pipetting 96 wells at once. This is vital for time-critical enzyme-based assays such as ELISA as all 96 reactions can be started and stopped simultaneously!



### **Perfectly timed reactions Start and stop simultaneously**

Liquidator 96 is vital for time-critical assays, such as ELISA, as reactions in all wells can be started and stopped at precisely the same time. No more rushing or well-to-well variability.



### **Error free All wells filled precisely**

Rainin Liquidator LTS tips guarantee absolutely consistent pickup. Whatever the dial is set to is exactly what is picked up in the tip with no variability between channels. All wells are filled with exactly the same sample volume.



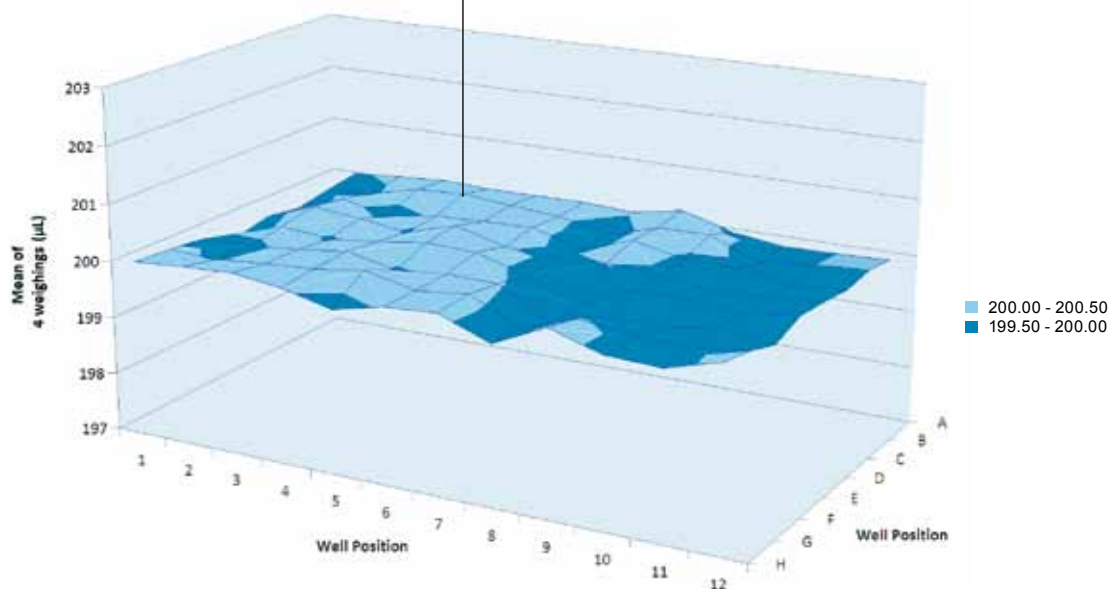
### **Flexible sample preparation with adjustable spacer pipette**

Use Rainin's adjustable spacer multichannel pipettes to move samples between different format vials, tubes and plates efficiently and precisely.



## Consistent Volume Delivery

This graph of actual data from a Liquidator 96 dispensing into a 96-well plate illustrates how all sample volumes are within a range of  $\pm 0.5\%$ .



# Precision Pipetting

Our Focus is Your Success!

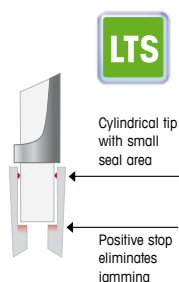


## Hand-friendly pipettes

### Quality and performance

Providing ergonomic, manual and electronic, single and multichannel pipettes for all routine and many high throughput applications.

► [www.mt.com/pipettes](http://www.mt.com/pipettes)

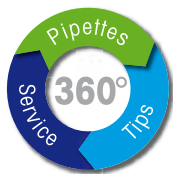


## LTS™ LiteTouch™ system

### The best choice for your hands

RAININ's LTS cylindrical shaft and tip design provides a reliable, consistent seal without excessive force. The small well-defined seal area and the positive stop decides exactly when the seal is made – no need to jam or pound the shaft into the tip.

► [www.mt.com/litetouchsystem](http://www.mt.com/litetouchsystem)



## Pipetting 360°™

### Brings true value to your lab

With high quality pipettes and tips, and a world-class service organization, RAININ is the only provider offering a full pipetting solution – “Pipetting 360°”, the broadest selection of pipettes, tips & services, enhancing pipetting performance, reducing total ownership cost through fewer out-of-tolerance pipettes and ensuring complete inventory management.

► [www.mt.com/pipetting360](http://www.mt.com/pipetting360)

[www.mt.com](http://www.mt.com)

For more information

#### Mettler-Toledo AG

CH-8606 Greifensee  
Switzerland  
Phone +41-44-944 22 11  
Fax +41-44-944 30 60

Subject to technical changes  
©06/2011 Mettler-Toledo AG  
Global MarCom Switzerland  
Printed in Switzerland 17700108